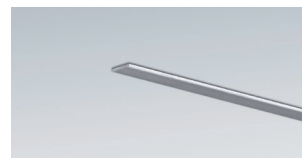
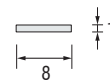
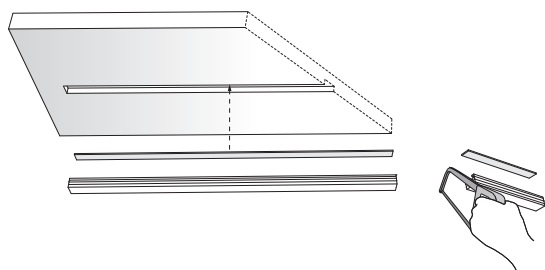
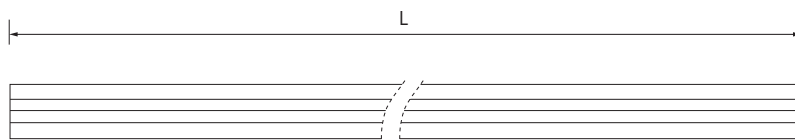
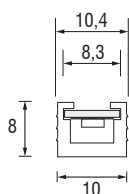
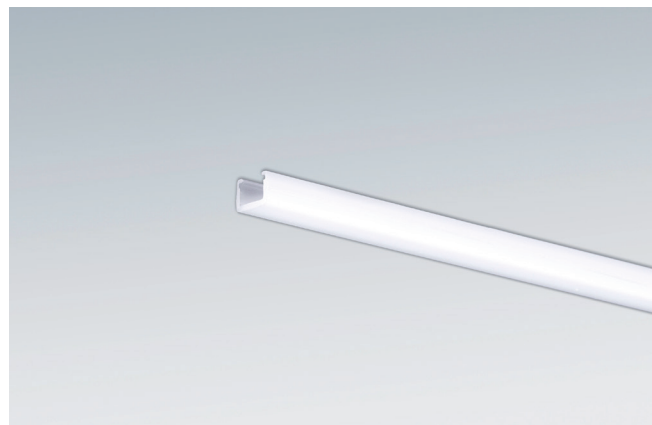


PRO-microSKY

- IT **Profilo in policarbonato per incasso** - Tagliabile a misura; abbinabile ad un dissipatore in alluminio, anch'esso tagliabile a misura.
- EN **Polycarbonate profile for flush mounting** - Cuttable to size; it combines with an aluminium heat sink, also cuttable to size.
- DE **Einbauprofil aus Polycarbonat** - Kürzbar und kombinierbar mit einem kürzbaren Aluminium-Wärmebleiter.



Ⓐ Dissipatore
Heat sink / Waermeableiter

Profilo - Profile - Profil	
L	Codice - Part no. - Artikel-Nr.
2000	682MS2000
3000	682MS3000
Dissipatore - Heat sink - Waermeableiter	
L	Codice - Part no. - Artikel-Nr.
2000	682D2000
Ⓐ 3000	682D3000

Dimensioni in millimetri (mm) - Dimensions in Millimeters (mm) - Dimensionen in Millimetern (mm)