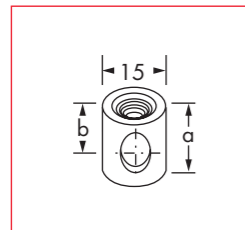


**XS-System 90 aus Stahl für Tische**  
**XS-Connecting system 90, steel, for table legs**

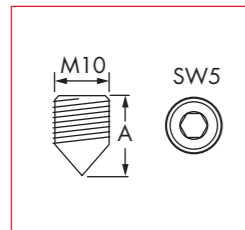
**So viele Gleichteile wie möglich über alle Baureihen zu nutzen,  
bringt die größte Kostenreduzierung**  
**Use the maximum number of components throughout the model range.**  
**This approach allows to lower the cost drastically**

**Gehäuse aus Stahl, verzinkt**  
**Housing made of steel, zinc plated**



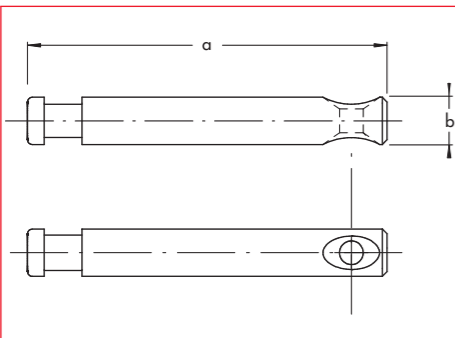
Artikel-Nr. Order-no.	Materialstärke panel thickness	Bohrtiefe Boring depth a (+0,5/-0 mm)	Maß b Dimension b	VE PU
J03 029	20,0 mm	17,0 mm	10,0 mm	1000
J01 550	22,0 mm	19,0 mm	12,0 mm	1000
J01 551	24,0 - 28,0 mm	21,0 mm	14,0 mm	500
J01 552	30,0 mm	28,0 mm	13,0 mm	500

**Madenschraube M10 aus Stahl**  
**Grub screw made of steel**



Artikel-Nr. Order-no.	M10	Maß A	VE PU
J03 006	M10	x 10 mm	1000
J01 549	M10	x 12 mm	1000

**Ankerdübel**  
**Anchor dowel**



Artikel-Nr. Order-no.	Maß a Dimension a	Maß b Dimension b	Bohrmaß Drilling	VE PU
J08 081	76,0 mm	10,0 mm	60,0 mm	1000

Patent angemeldet  
Patent pending

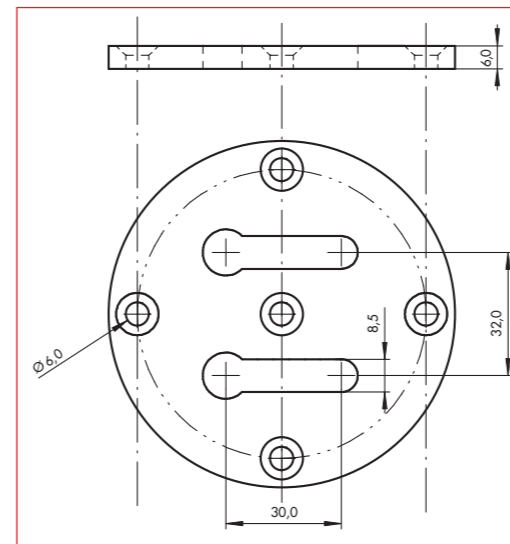
**PATENT ANGEMELDET**  
**PATENT PENDING**

**XS-System 90 aus Stahl für Tische**  
**XS-Connecting system 90, steel, for table legs**

**Ankerplatte rund, vernickelt**  
**anchor plate nickel plated**



Artikel-Nr. Order-no.	Durchmesser Diameter	Stärke Material thickness	VE PU
M01039	90,0 mm	6,0 mm	100



**PATENT ANGEMELDET**  
**PATENT PENDING**

