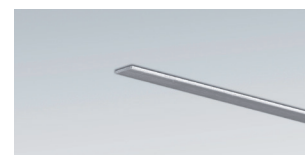
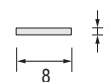
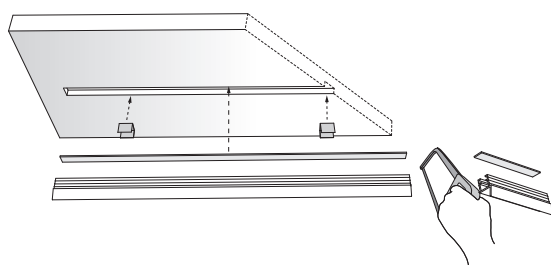
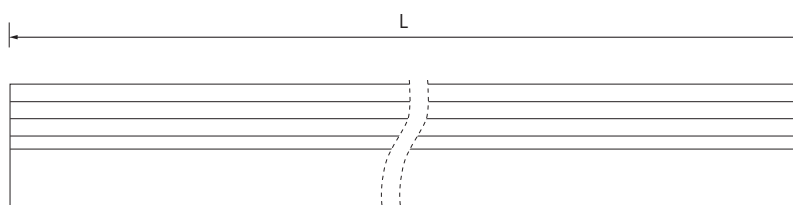
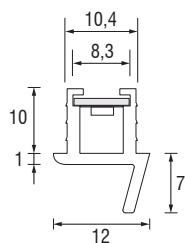
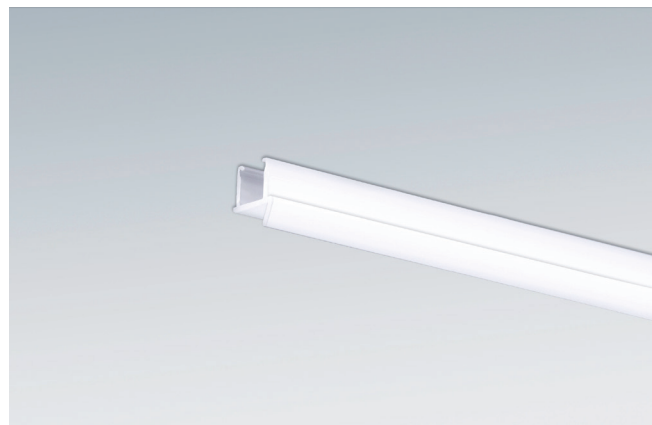


PRO-SKY-vela

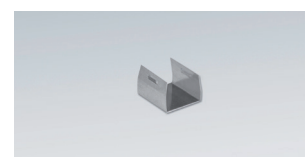
☐ **Profilo in policarbonato per incasso** - Tagliabile a misura; abbinabile ad un dissipatore in alluminio, anch'esso tagliabile a misura. Per l'installazione è possibile utilizzare le clip di ancoraggio (opzionali).

☐ **Polycarbonate profile for flush mounting** - Cuttable to size; it combines with an aluminium heat sink, also cuttable to size. Installation by means of fixing clips (optional).

☐ **Einbauprofil aus Polycarbonat** - Kürzbar und kombinierbar mit einem kürzbaren Aluminium-Wärmeableiter. Montage mit Befestigungsclips (optional).



Ⓐ Dissipatore
Heat sink / Wärmeableiter



Ⓑ Clip di fissaggio / Fixing clip / Clip
Cava di incasso (10)+1mm
Recessed hole / Einbaumaße

Profilo - Profile - Profil	
L	Codice - Part no. - Artikel-Nr.
2000	682SV2000
3000	682SV3000
Dissipatore - Heat sink - Wärmeableiter	
L	Codice - Part no. - Artikel-Nr.
2000	682D2000
Ⓐ 3000	682D3000
Clip di fissaggio - Fixing clip - Clip	
PCS	Codice - Part no. - Artikel-Nr.
Ⓑ 1	682M001

Dimensioni in millimetri (mm) - Dimensions in Millimeters (mm) - Dimensionen in Millimetern (mm)