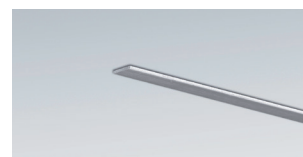
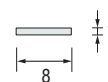
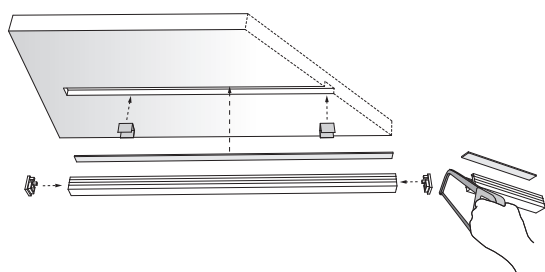
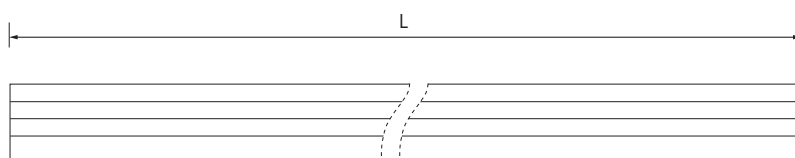
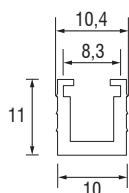
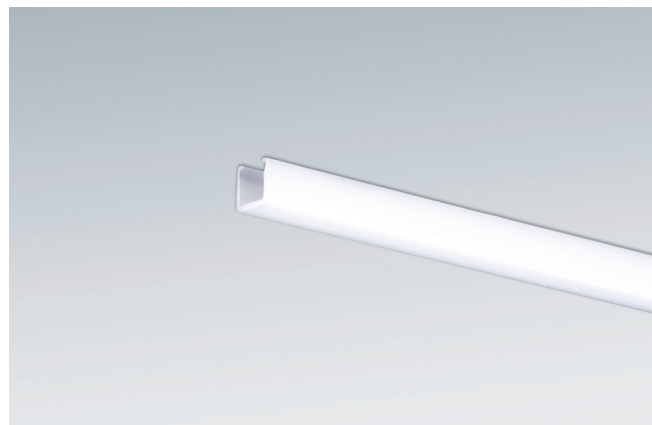


# PRO-SKY

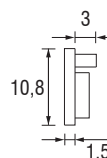
**IT Profilo in policarbonato per incasso** - Tagliabile a misura; abbinabile ad un dissipatore in alluminio, anch'esso tagliabile a misura, e a terminali di chiusura (opzionali). Per l'installazione è possibile utilizzare le clip di ancoraggio (opzionali).

**EN Polycarbonate profile for flush mounting** - Cuttable to size; it combines with an aluminium heat sink, also cuttable to size, and end caps (optional). Installation by means of fixing clips (optional).

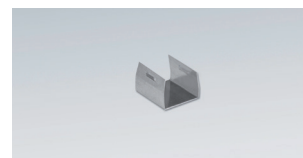
**DE Einbauprofil aus Polycarbonat** - Kürzbar und kombinierbar mit einem kürzbaren Aluminium-Wärmeableiter und Endkappen (optional). Montage mit Befestigungsclips (optional).



Ⓐ Dissipatore  
Heat sink / Waermeableiter



Ⓑ Terminali / End covers / Endkappen



Ⓒ Clip di fissaggio / Fixing clip / Clip  
Cava di incasso (10) + 1mm  
Recessed hole / Einbaumaße

Profilo - Profile - Profil	
L	Codice - Part no. - Artikel-Nr.
2000	682S2000
3000	682S3000
Dissipatore - Heat sink - Waermeableiter	
L	Codice - Part no. - Artikel-Nr.
2000	682D2000
Ⓐ 3000	682D3000
Terminali - End covers - Endkappen	
PCS	Codice - Part no. - Artikel-Nr.
Ⓑ 1	682T0001
Clip di fissaggio - Fixing clip - Clip	
PCS	Codice - Part no. - Artikel-Nr.
Ⓒ 1	682M001

Dimensioni in millimetri (mm) - Dimensions in Millimeters (mm) - Dimensionen in Millimetern (mm)