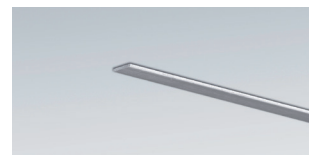
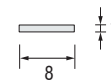
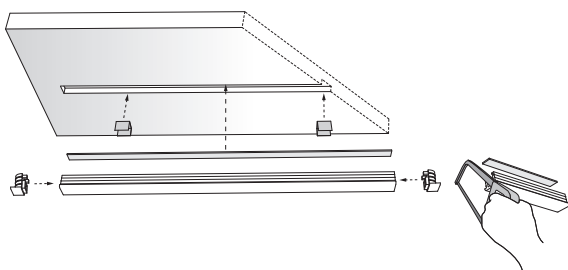
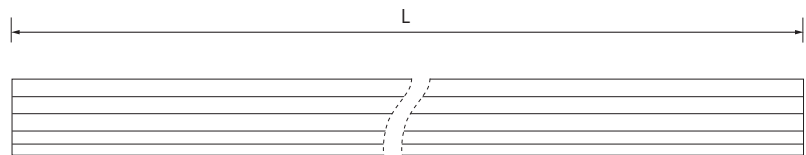
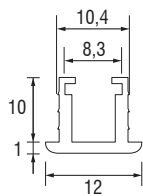
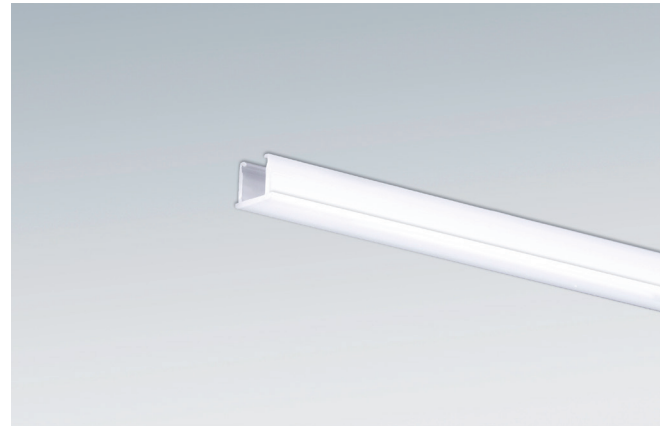


PRO-SKY-B

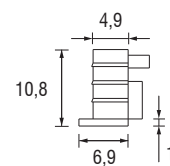
IT Profilo in policarbonato per incasso - Tagliabile a misura; abbinabile ad un dissipatore in alluminio, anch'esso tagliabile a misura, e a terminali di chiusura (opzionali). Per l'installazione è possibile utilizzare le clip di ancoraggio (opzionali).

EN Polycarbonate profile for flush mounting - Cuttable to size; it combines with an aluminium heat sink, also cuttable to size, and end caps (optional). Installation by means of fixing clips (optional).

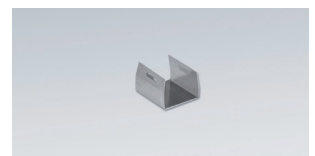
DE Einbauprofil aus Polycarbonat - Kürzbar und kombinierbar mit einem kürzbaren Aluminium-Wärmeableiter und Endkappen (optional). Montage mit Befestigungsclips (optional).



(A) Dissipatore
Heat sink / Waermeableiter



(B) Terminali / End covers / Endkappen



(C) Clip di fissaggio / Fixing clip / Clip
Cava di incasso (10) + 1mm
Recessed hole / Einbaumaße

Profilo - Profile - Profil	
L	Codice - Part no. - Artikel-Nr.
2000	682SB2000
3000	682SB3000
Dissipatore - Heat sink - Waermeableiter	
L	Codice - Part no. - Artikel-Nr.
2000	682D2000
(A) 3000	682D3000
Terminali - End covers - Endkappen	
PCS	Codice - Part no. - Artikel-Nr.
(B) 1	682T0003
Clip di fissaggio - Fixing clip - Clip	
PCS	Codice - Part no. - Artikel-Nr.
(C) 1	682M001

Dimensioni in millimetri (mm) - Dimensions in Millimeters (mm) - Dimensionen in Millimetern (mm)