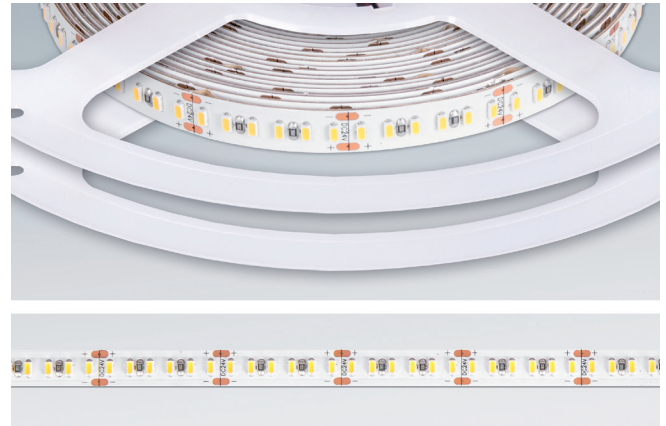


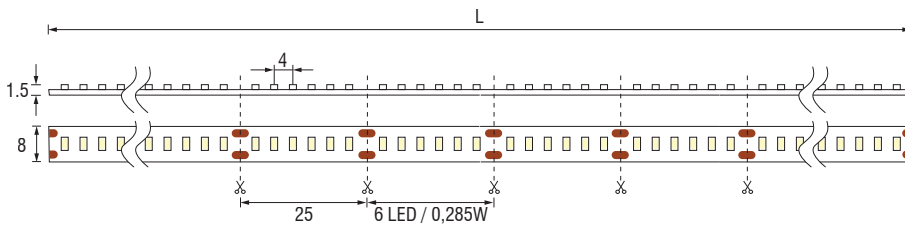
BOBINA 11,4W/m

LED 24V - 57W (5m x 11,4W/m)

- ☐ **Bobina LED adesiva** - Sezionabile; si consiglia l'applicazione su materiali ad alta conduzione termica (es. alluminio).
- ☐ **Adhesive LED Reel** - Cuttable; application on high heat conductivity (ex. aluminium) materials is recommended.
- ☐ **Selbsklebendes LED-Band** - Kuerzbar; Anwendung mit waermeleitfaehigen Werkstoffen (z.B. Aluminium) wird empfohlen.



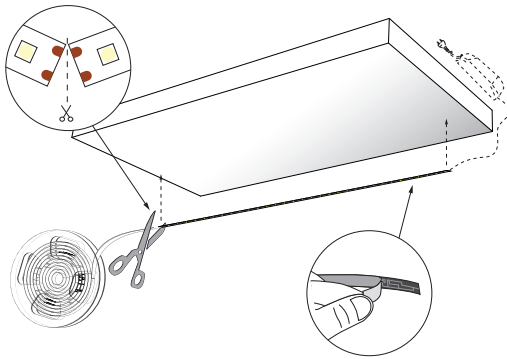
108-118 lm/W PHOTOBIOLOGICAL CLASS 0 CRI > 80
 CE ENEC EMC



CONNECTION SYSTEM



Saldatura / Welding / Loeten



L	LED No.	V	3000 K		4000 K		Imballo - Packaging - Verpackung		
			Codice - Part no. - Artikel-Nr.	EEC	Codice - Part no. - Artikel-Nr.	EEC	Pcs	Kg	mm
5000	1200	24V	5L532C	A	5L532	A	1	0,088	10 x 200 x 210

BOBINA / REEL 1000mm LED 24V-11,4W/m		LUX
		3000K
		4000K
mm		
250	∅ 1000	2100
		2300
500	∅ 2100	800
		900
750	∅ 3100	500
		550
1000	∅ 4200	300
		300

Dimensioni in millimetri (mm) / Dimensions in Millimeters (mm) / Dimensionen in Millimetern (mm)
 Alimentatore non incluso / Driver not included / LED-Konverter nicht inbegriffen