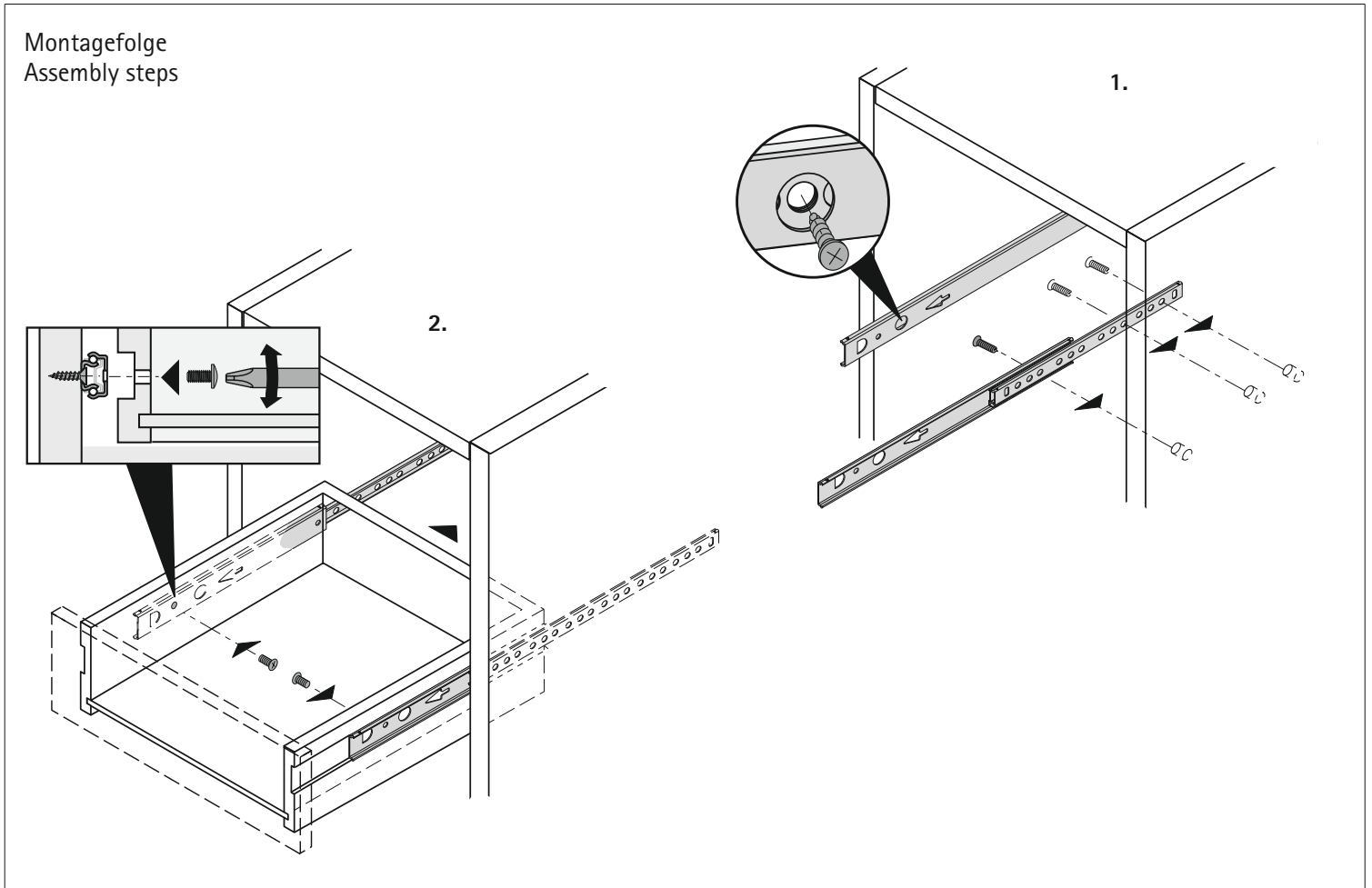
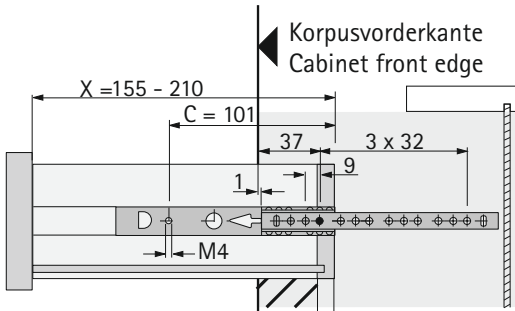


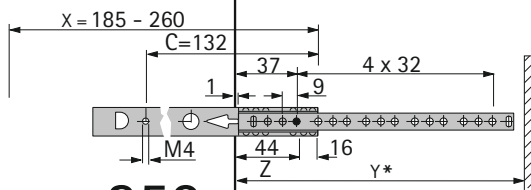
Montagefolge  
Assembly steps



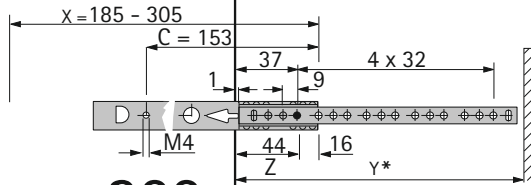
**KA 1730**



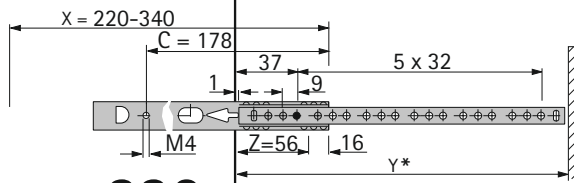
**KA 1730/200**



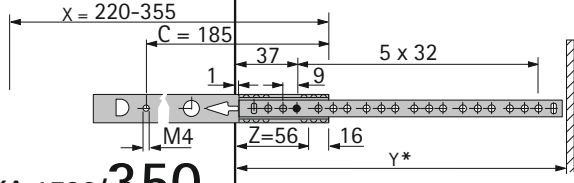
**KA 1730/250**



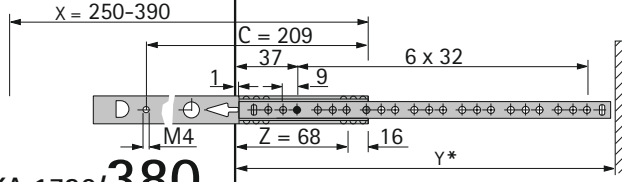
**KA 1730/300**



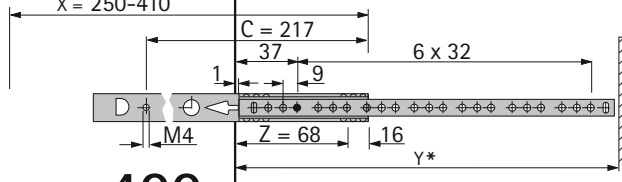
**KA 1730/330**



**KA 1730/350**

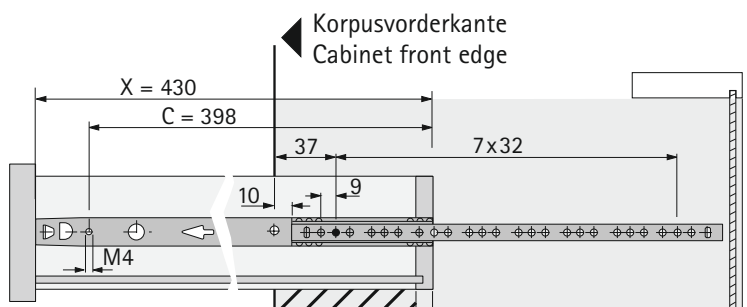


**KA 1730/380**

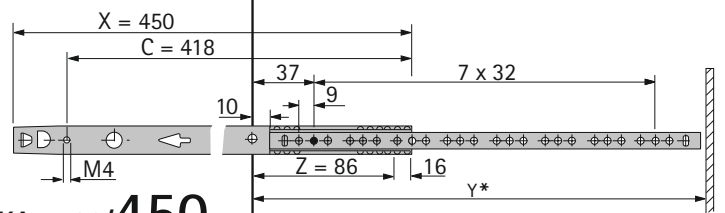


**KA 1730/400**

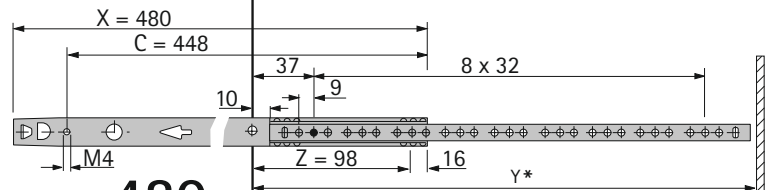
**KA 1730 mit Frontabstützung  
KA 1730 with front support**



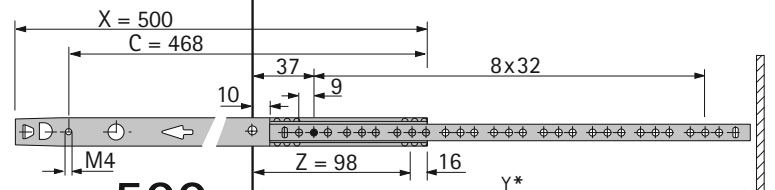
**KA 1730/430**



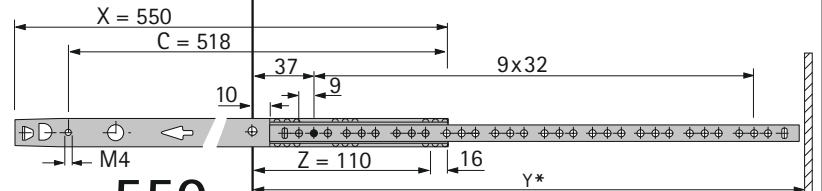
**KA 1730/450**



**KA 1730/480**



**KA 1730/500**



**KA 1730/550**

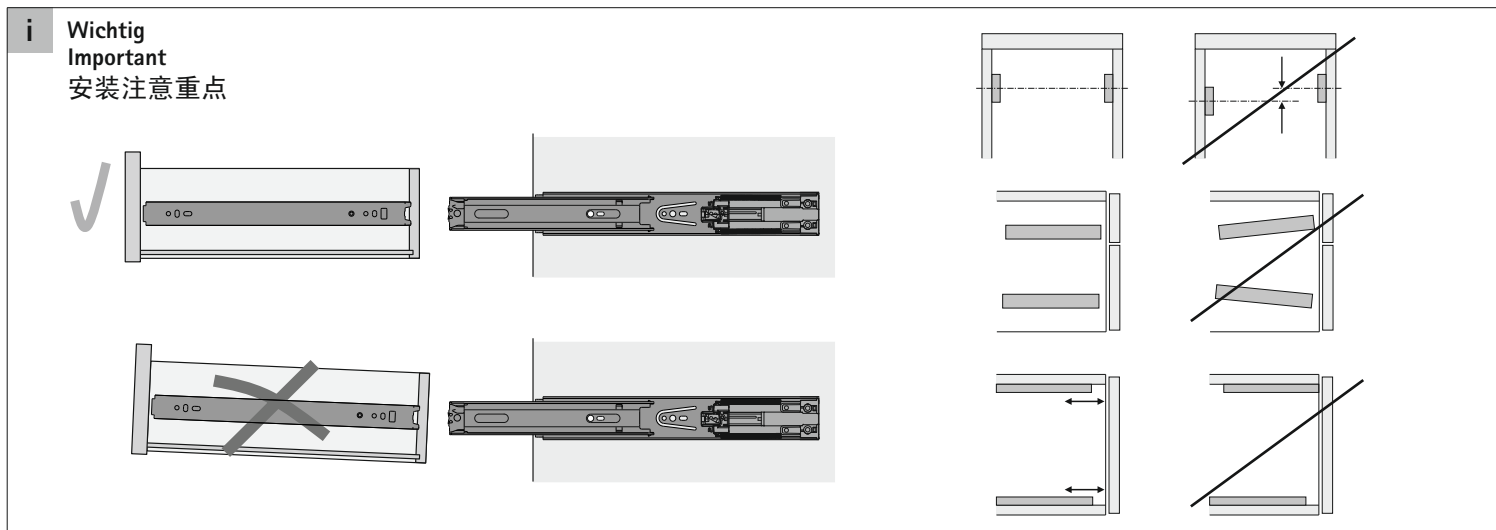
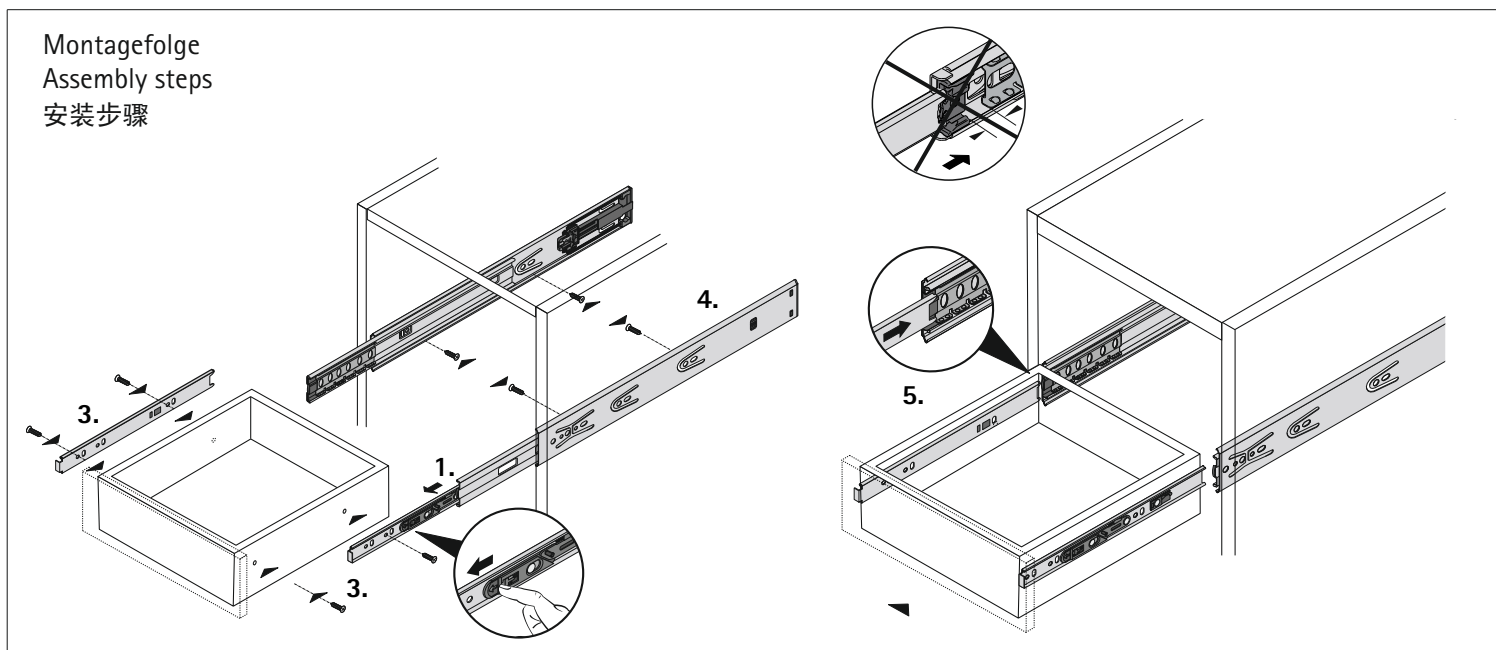
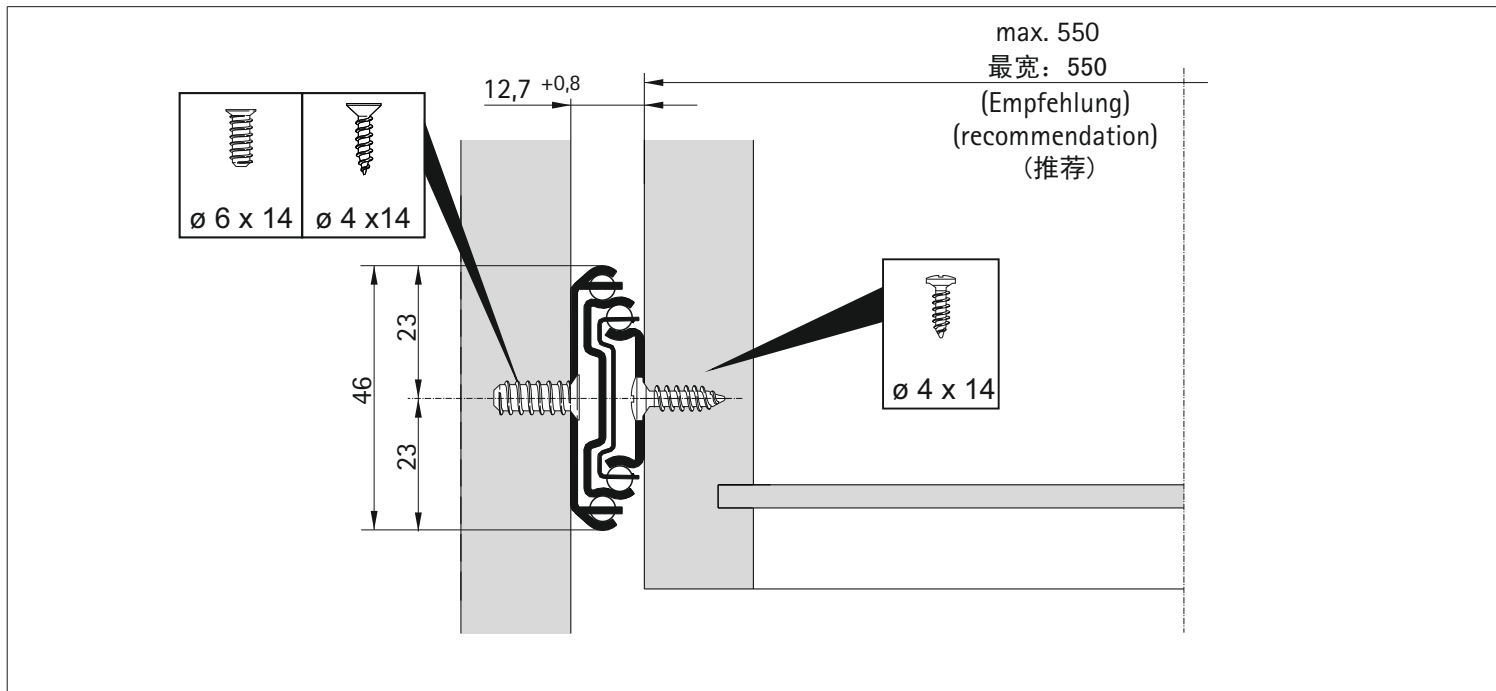
C = Lochabstand  
Hole distance

X = Schubkastenlänge  
Drawer length

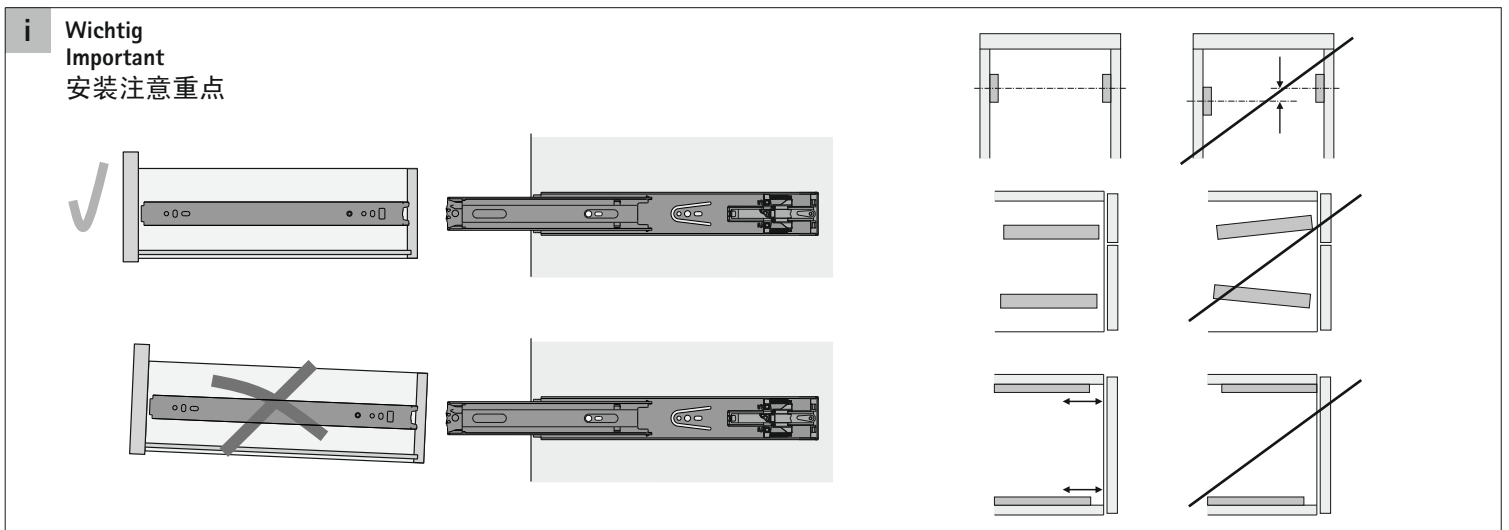
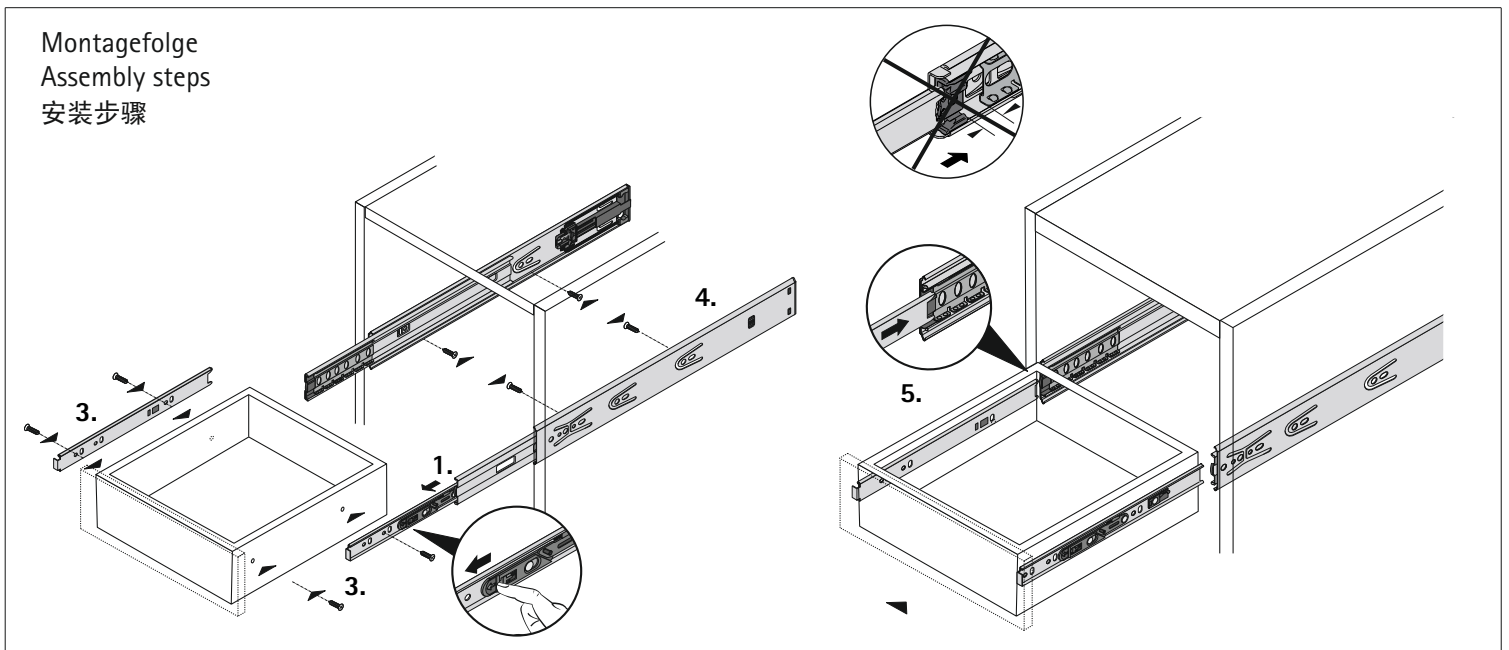
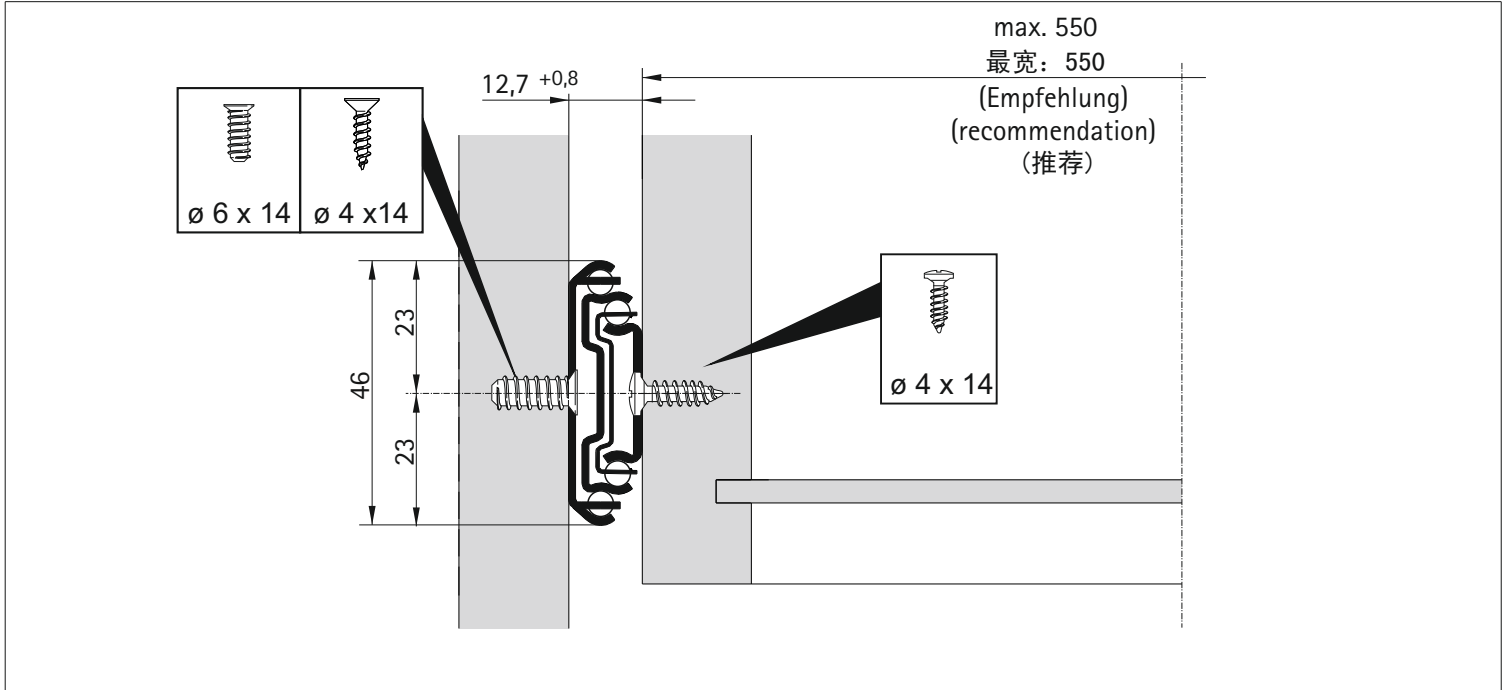
Y = Mindestkorpustiefe  
Min. cabinet depth

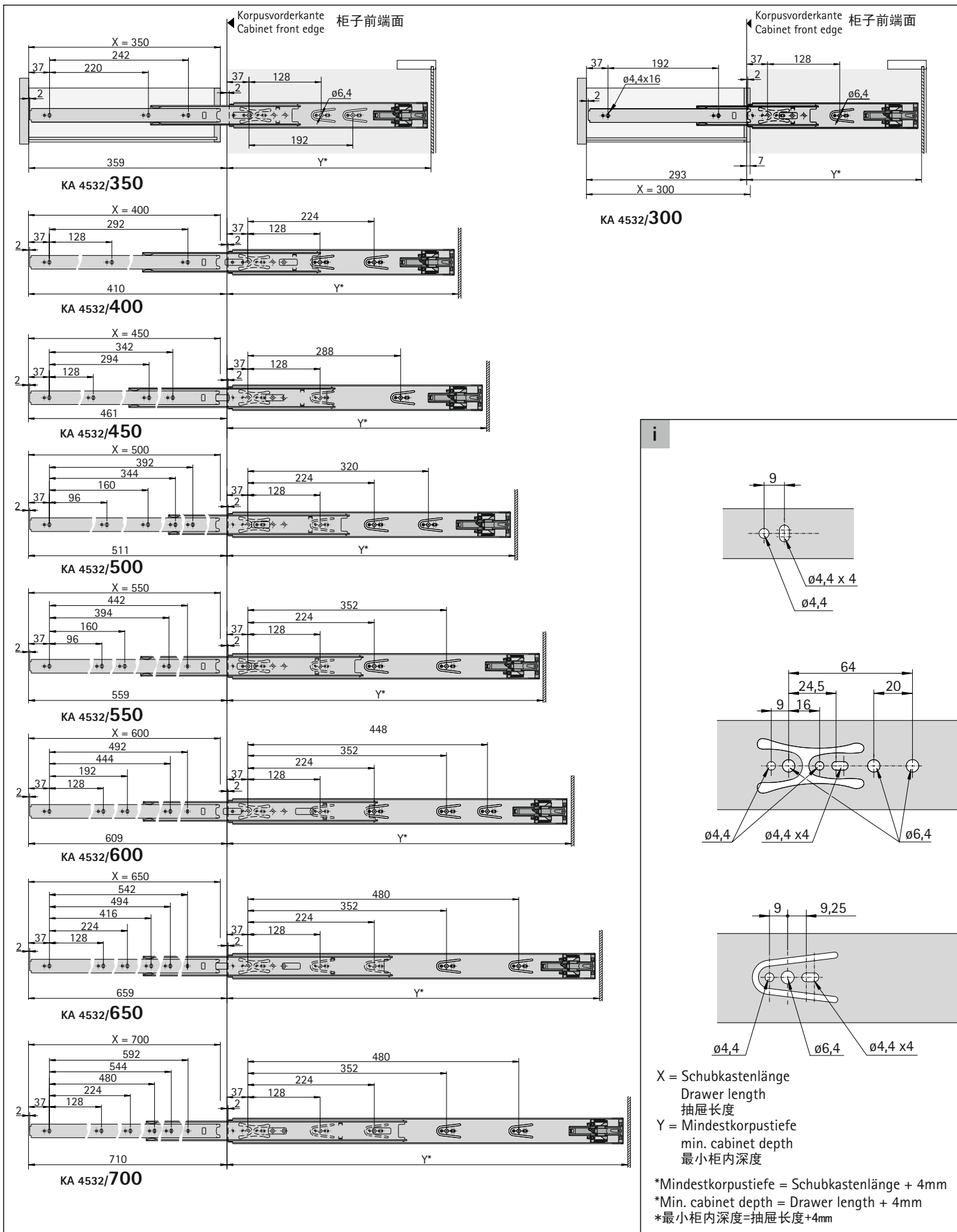
Z = Auszugsverlust  
Extension loss

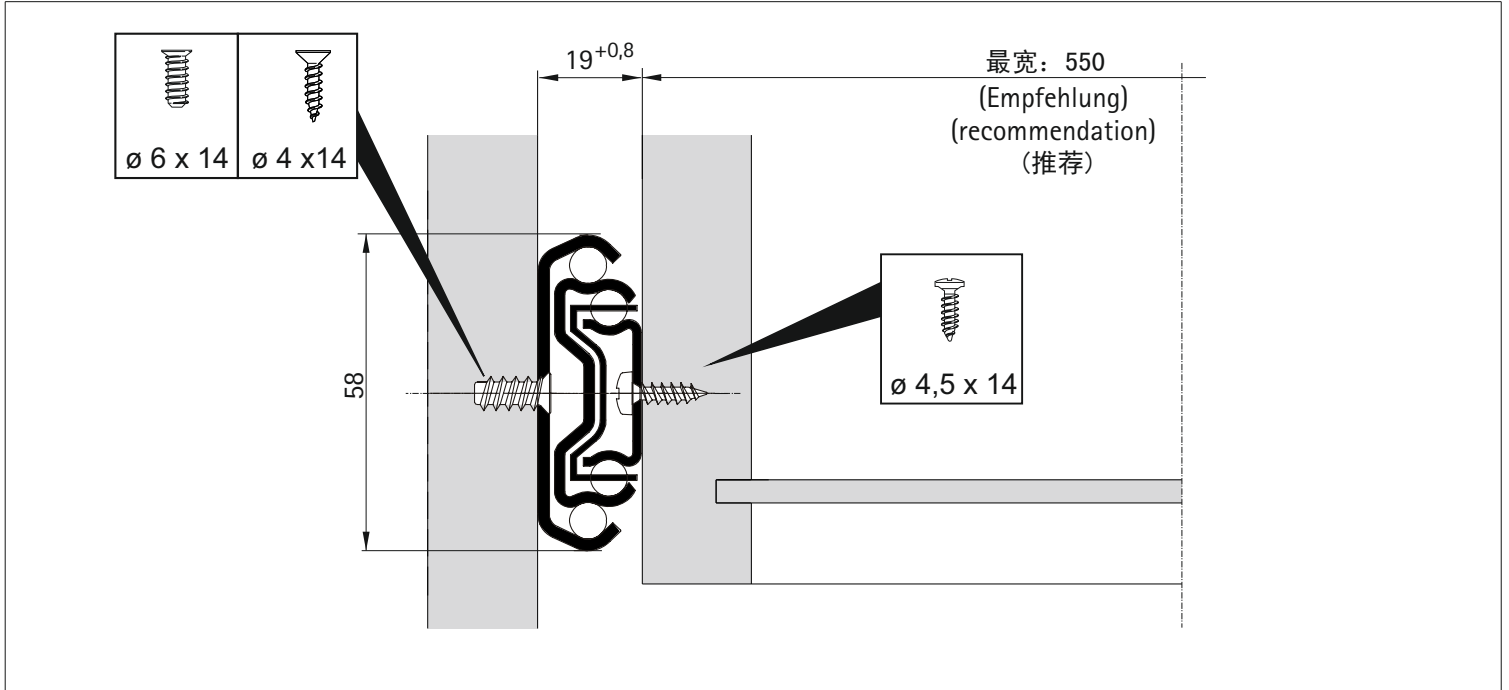
\* Mindestkorpustiefe = Schubkastenlänge + 1 mm  
\* Min. cabinet depth = Drawer length + 1 mm



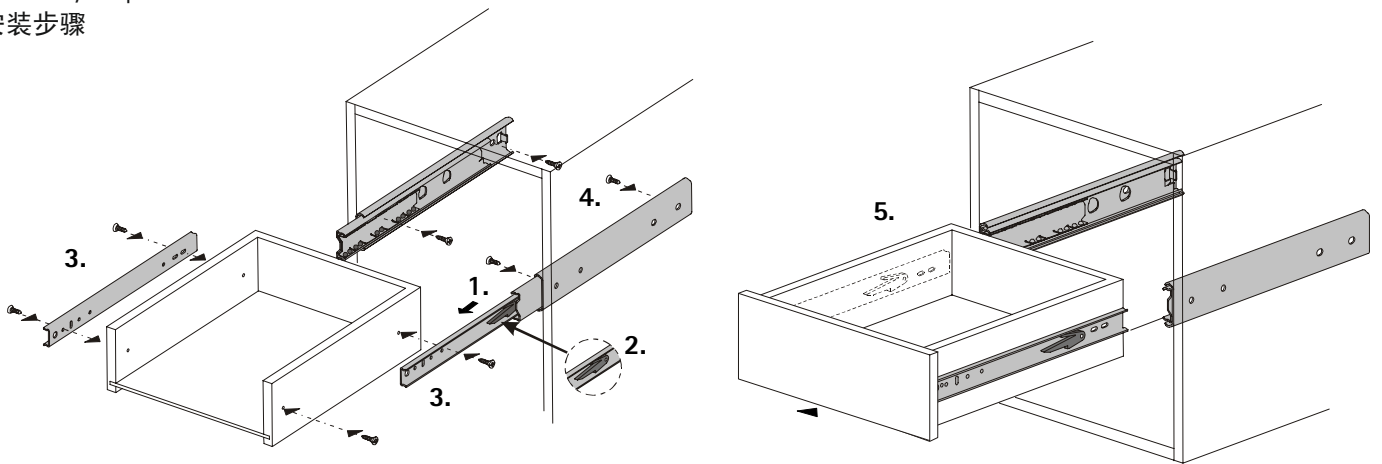




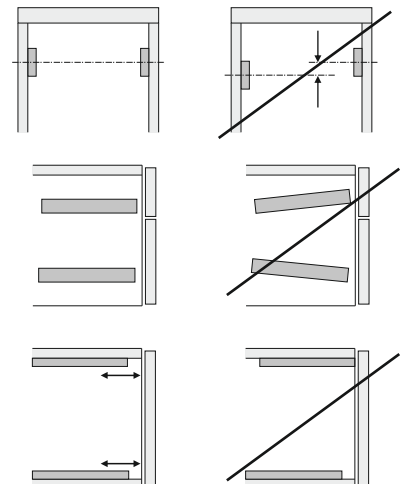
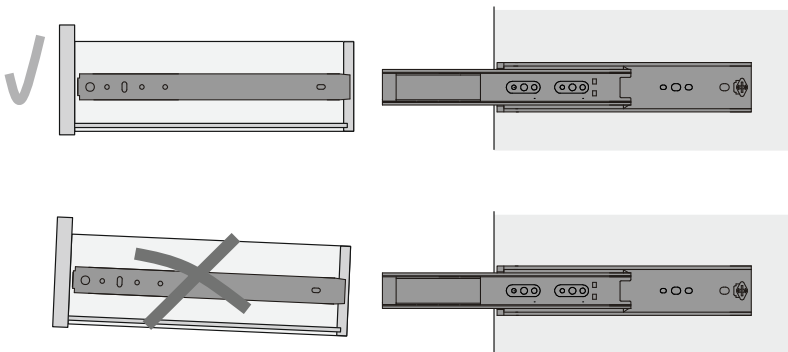


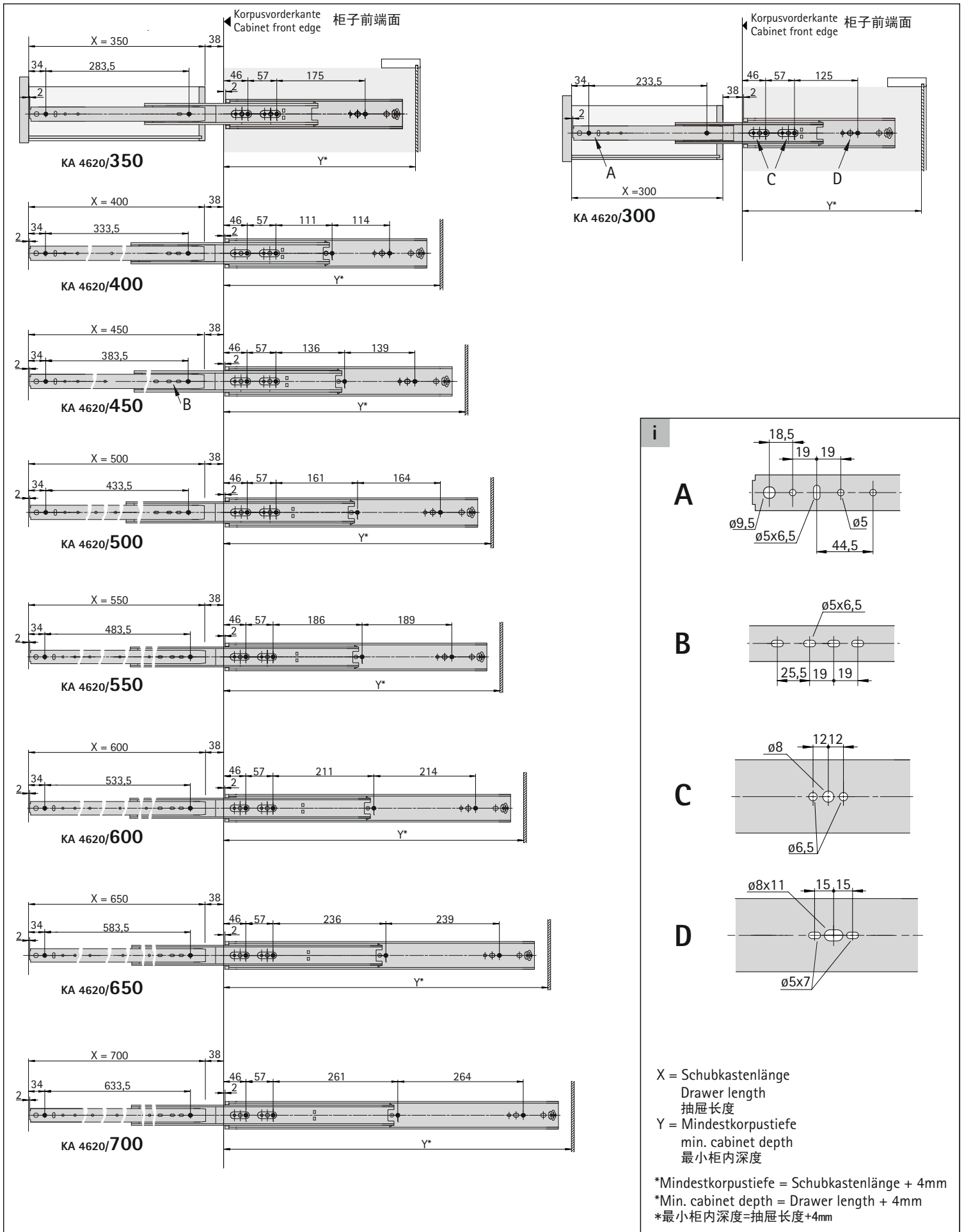


Montagefolge  
Assembly steps  
安装步骤

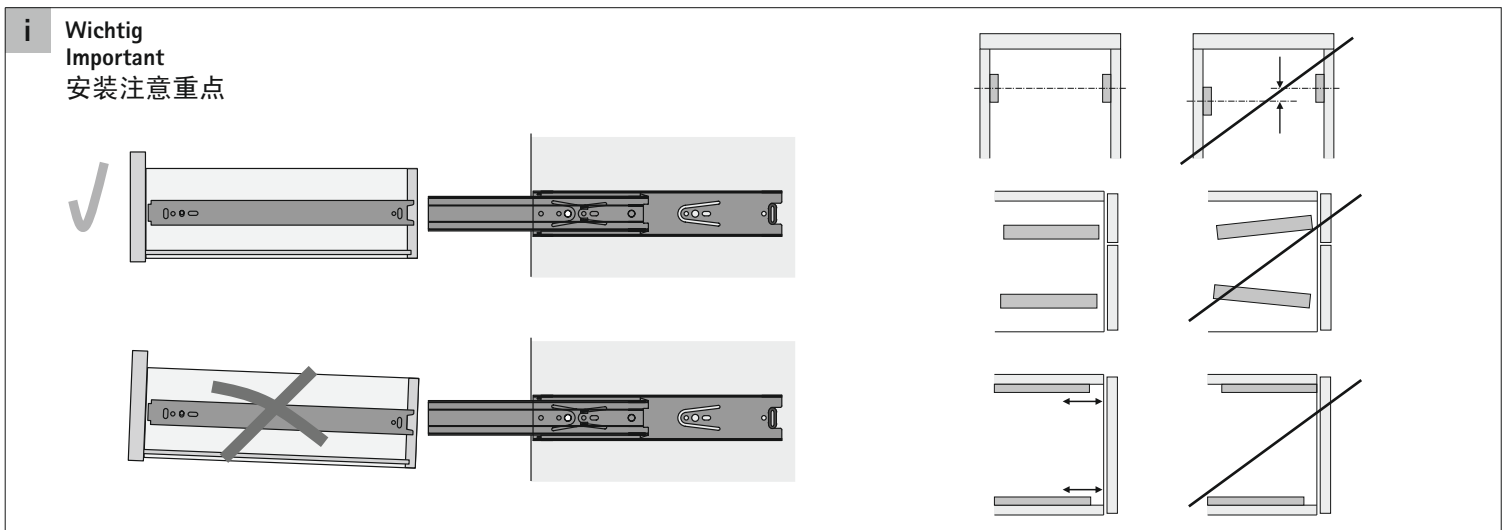
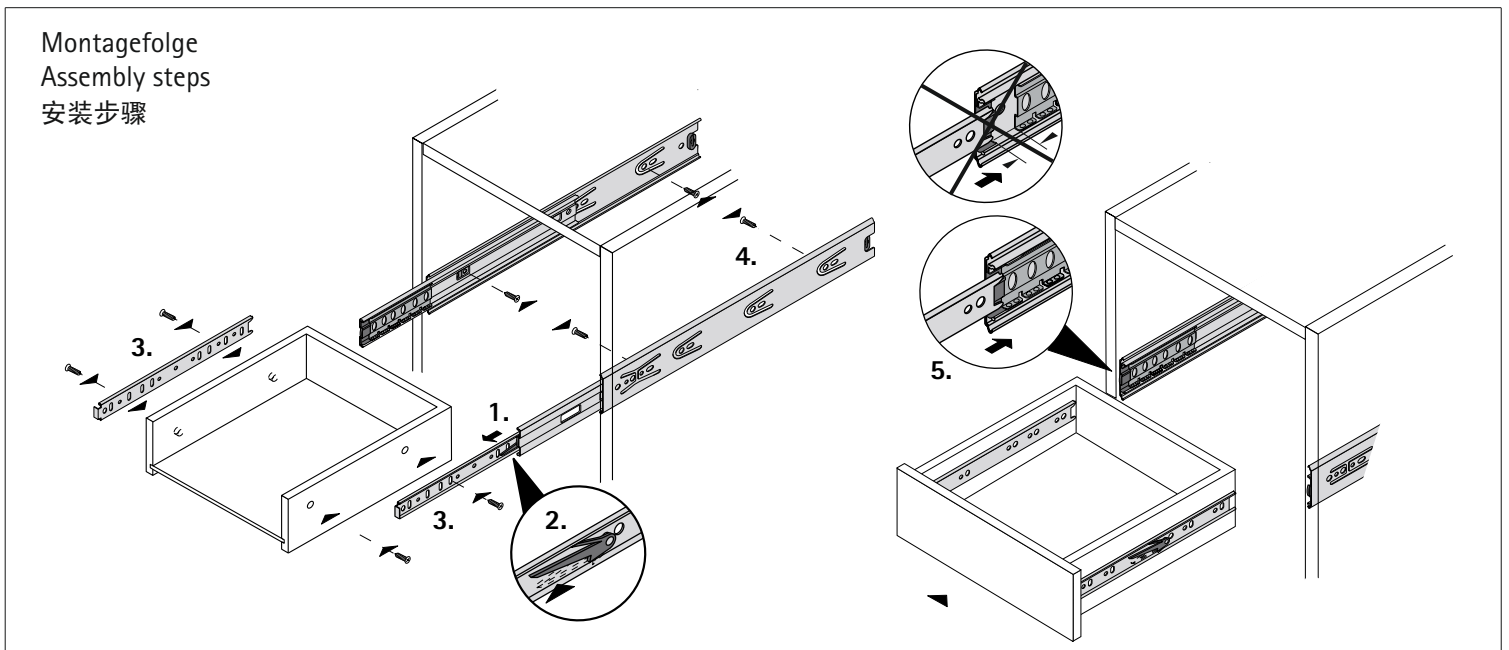
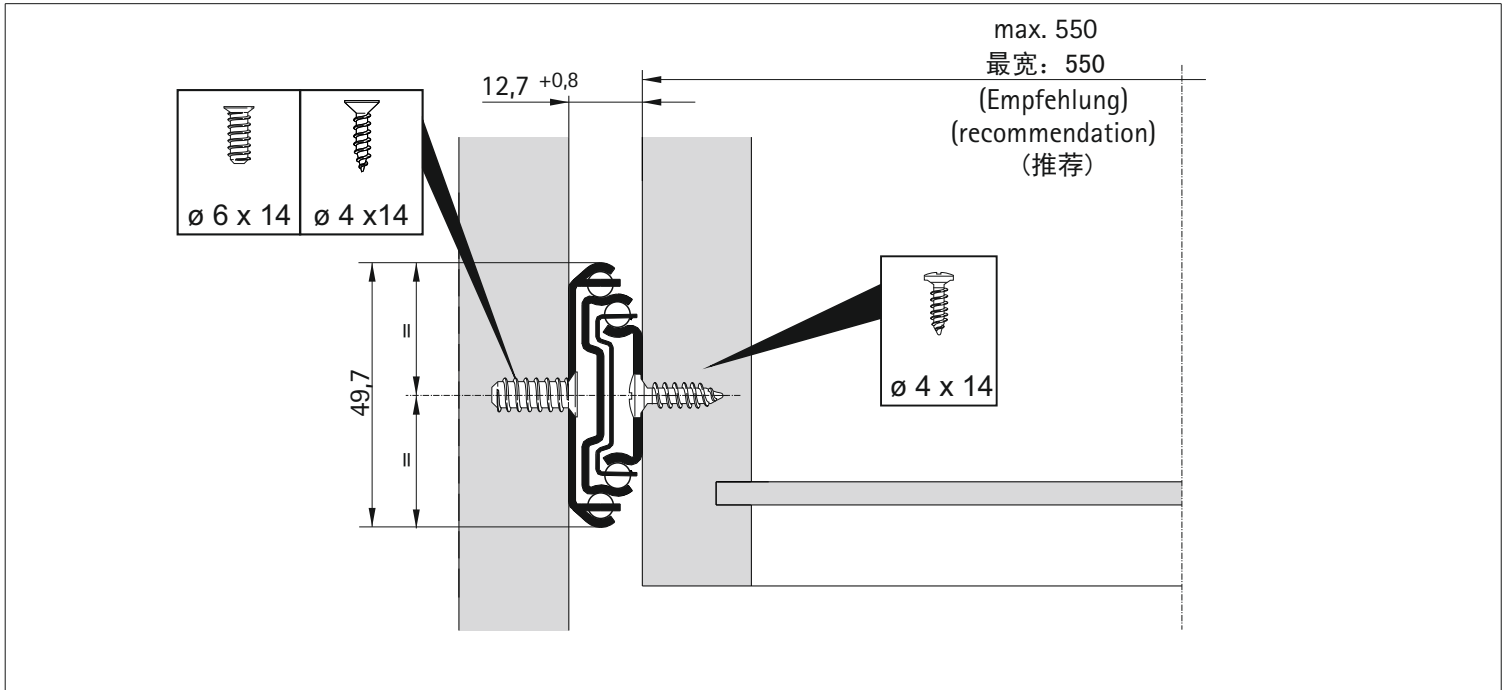


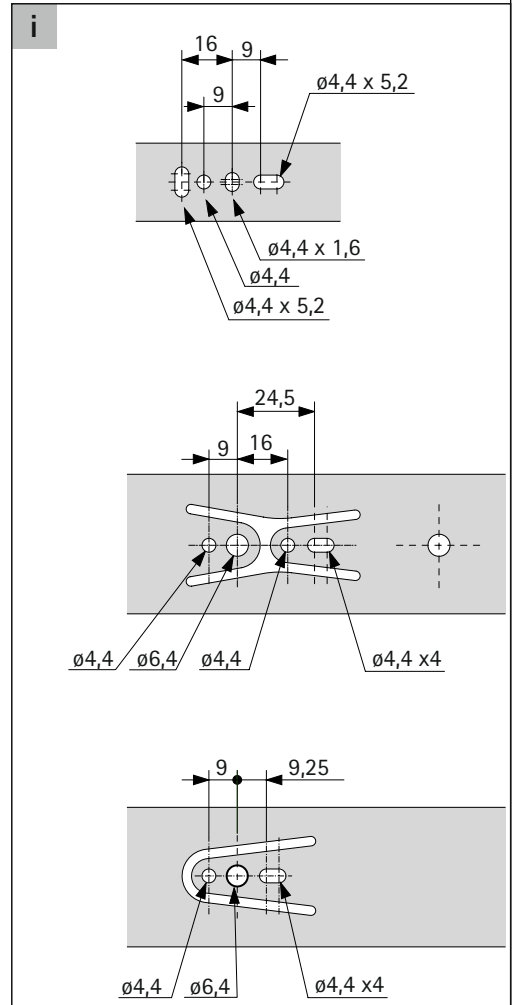
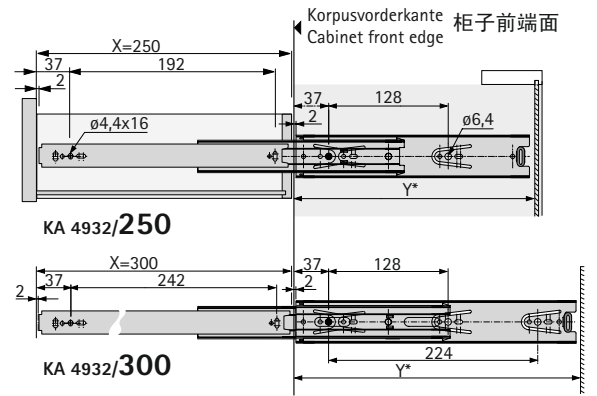
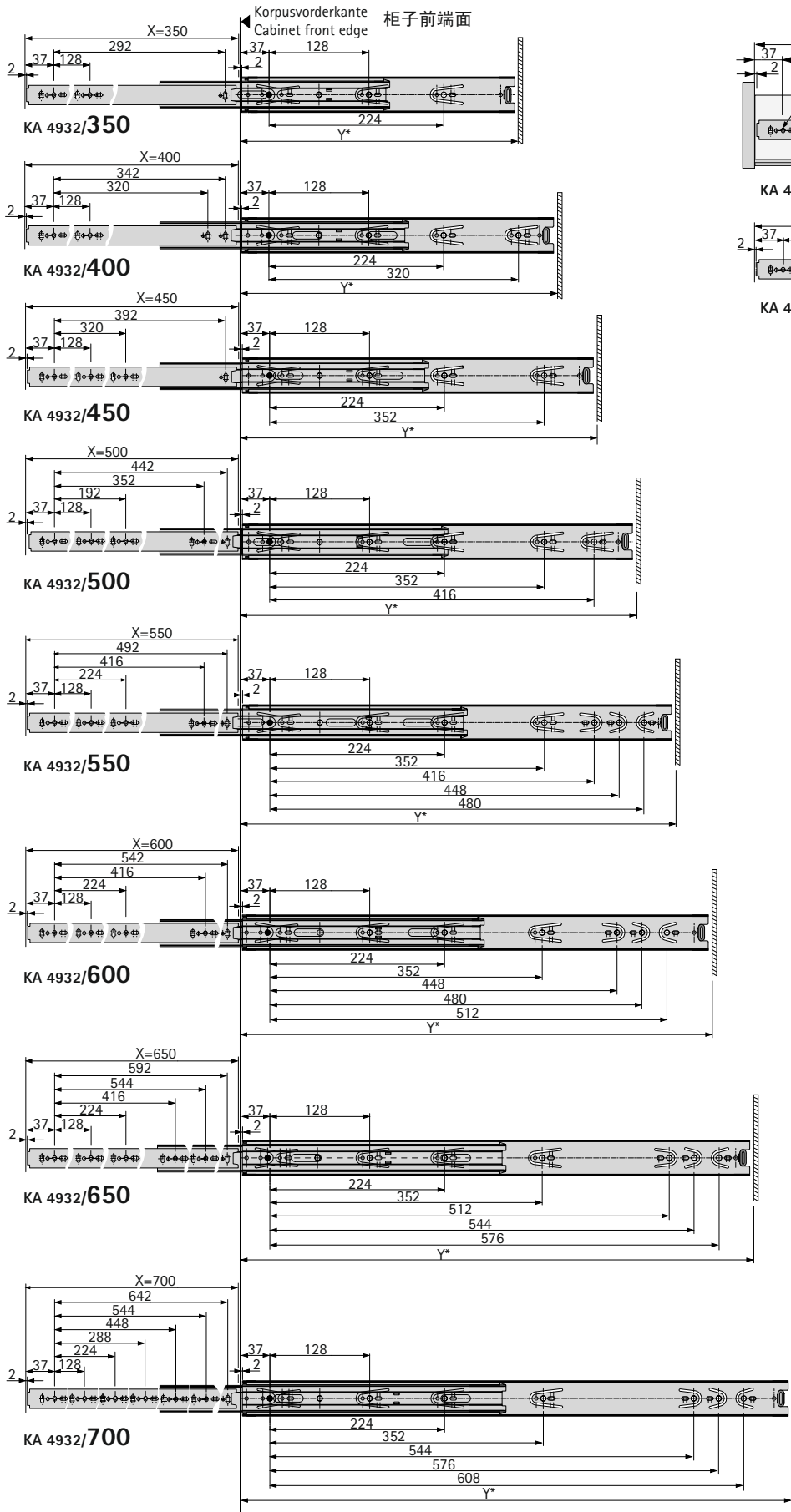
**i** Wichtig  
Important  
安装注意重点











X = Schubkastenlänge

Drawer length

抽屉长度

Y = Mindestkorpustiefe

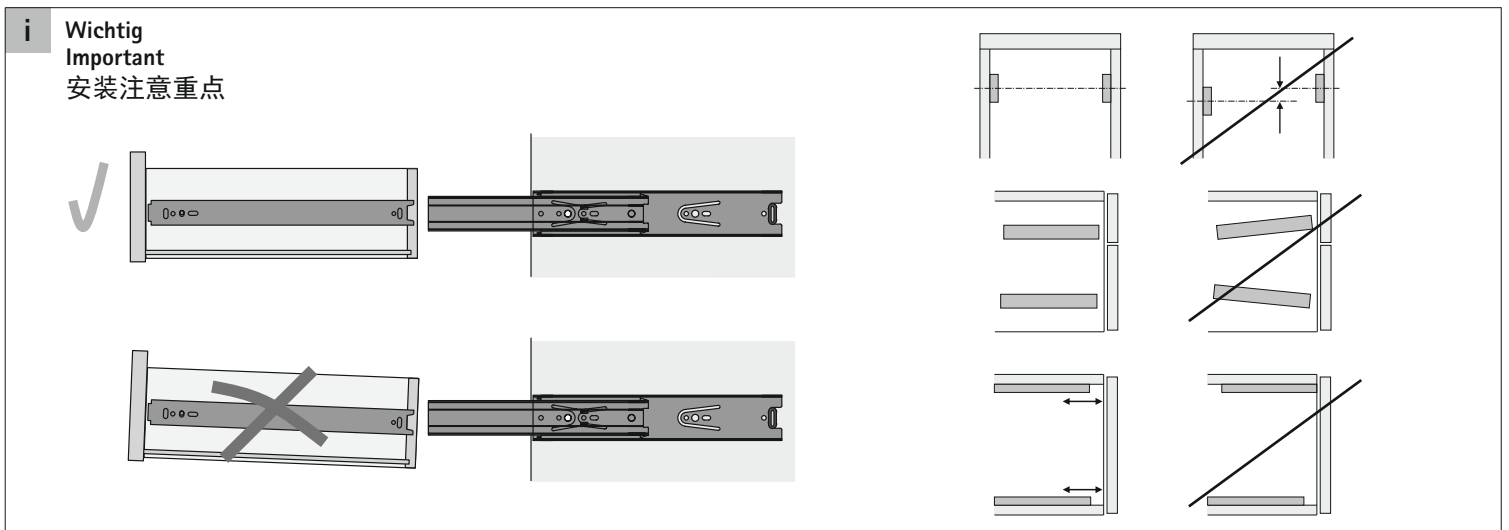
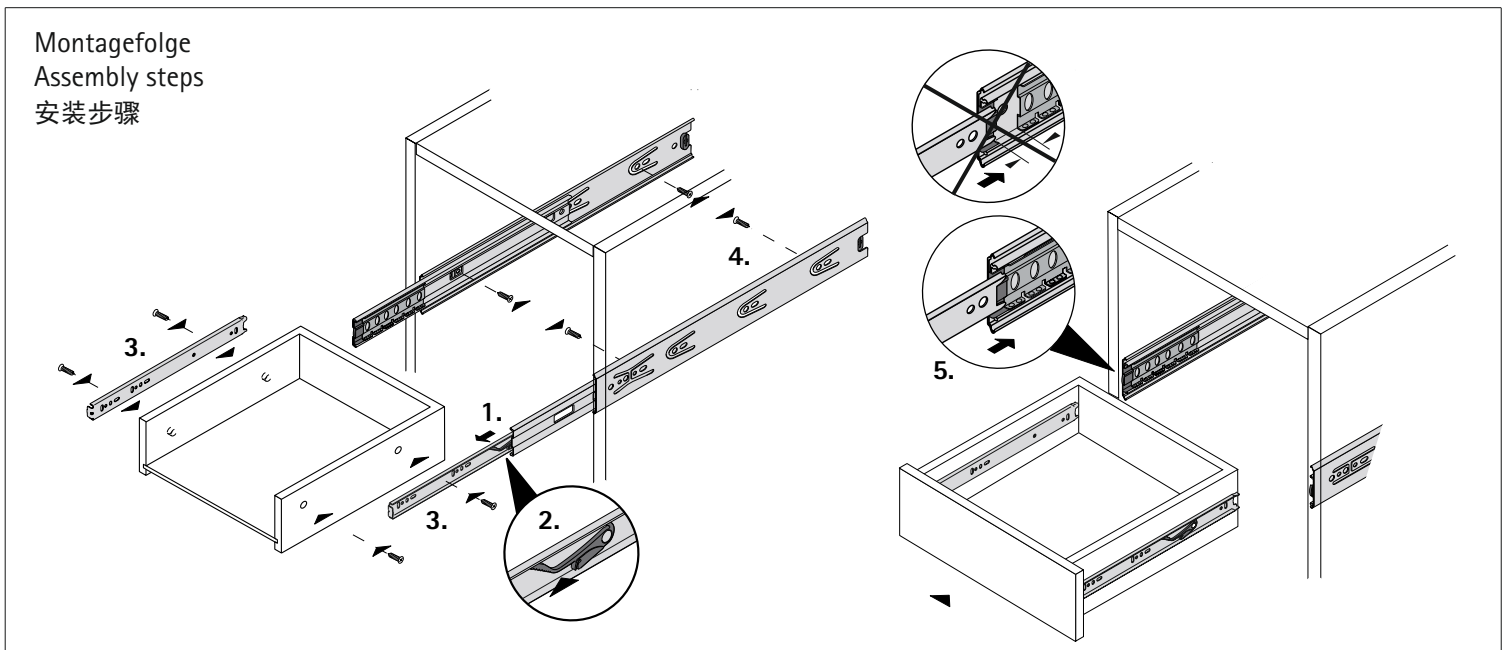
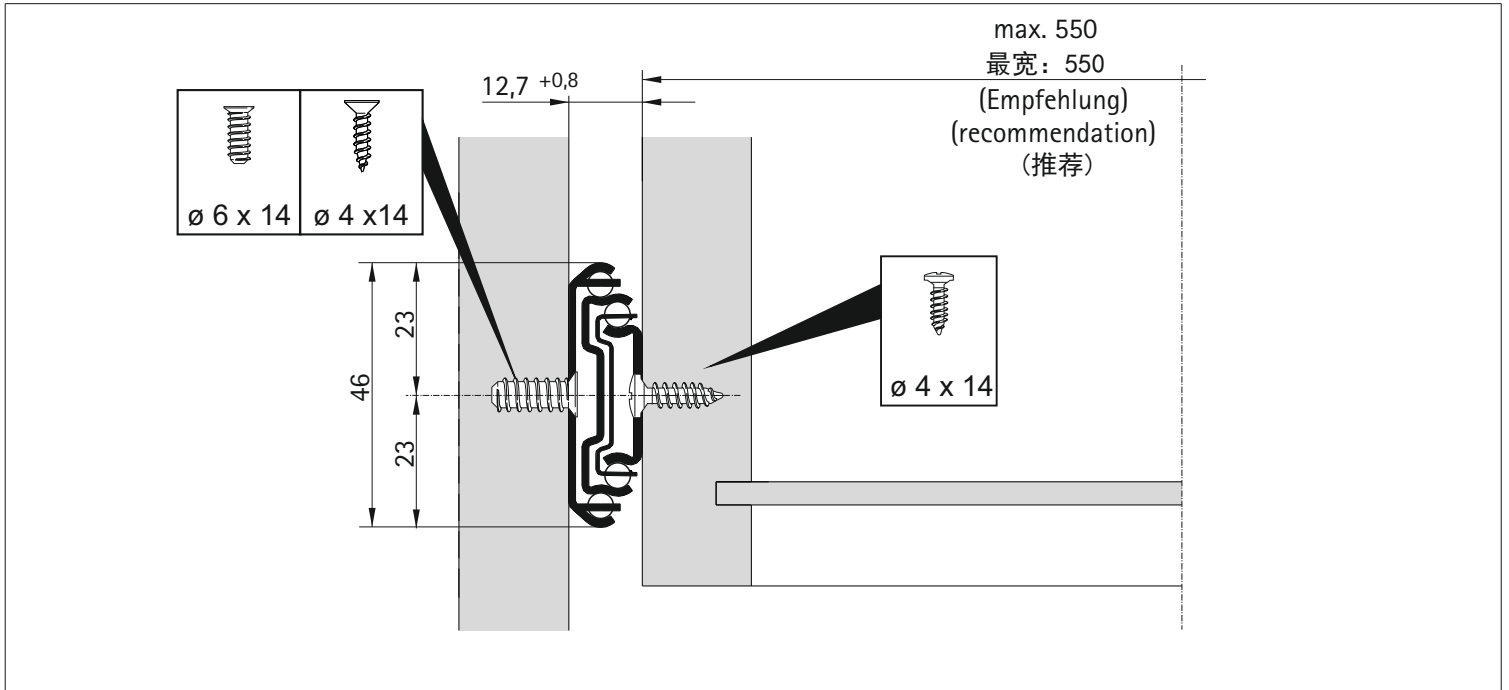
min. cabinet depth

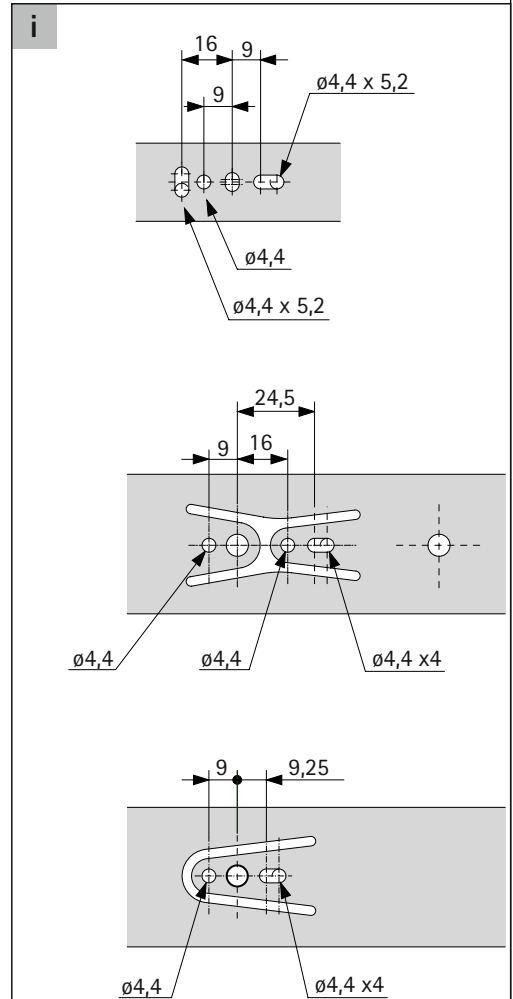
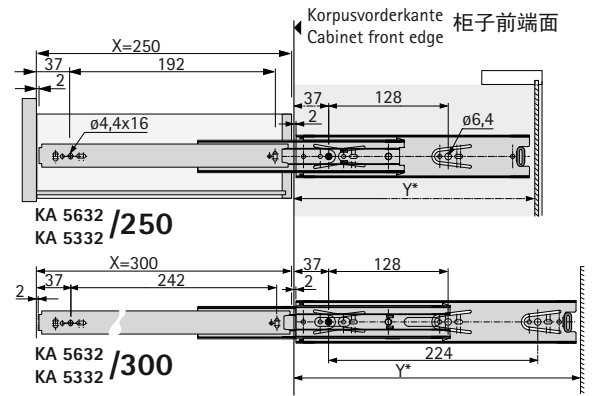
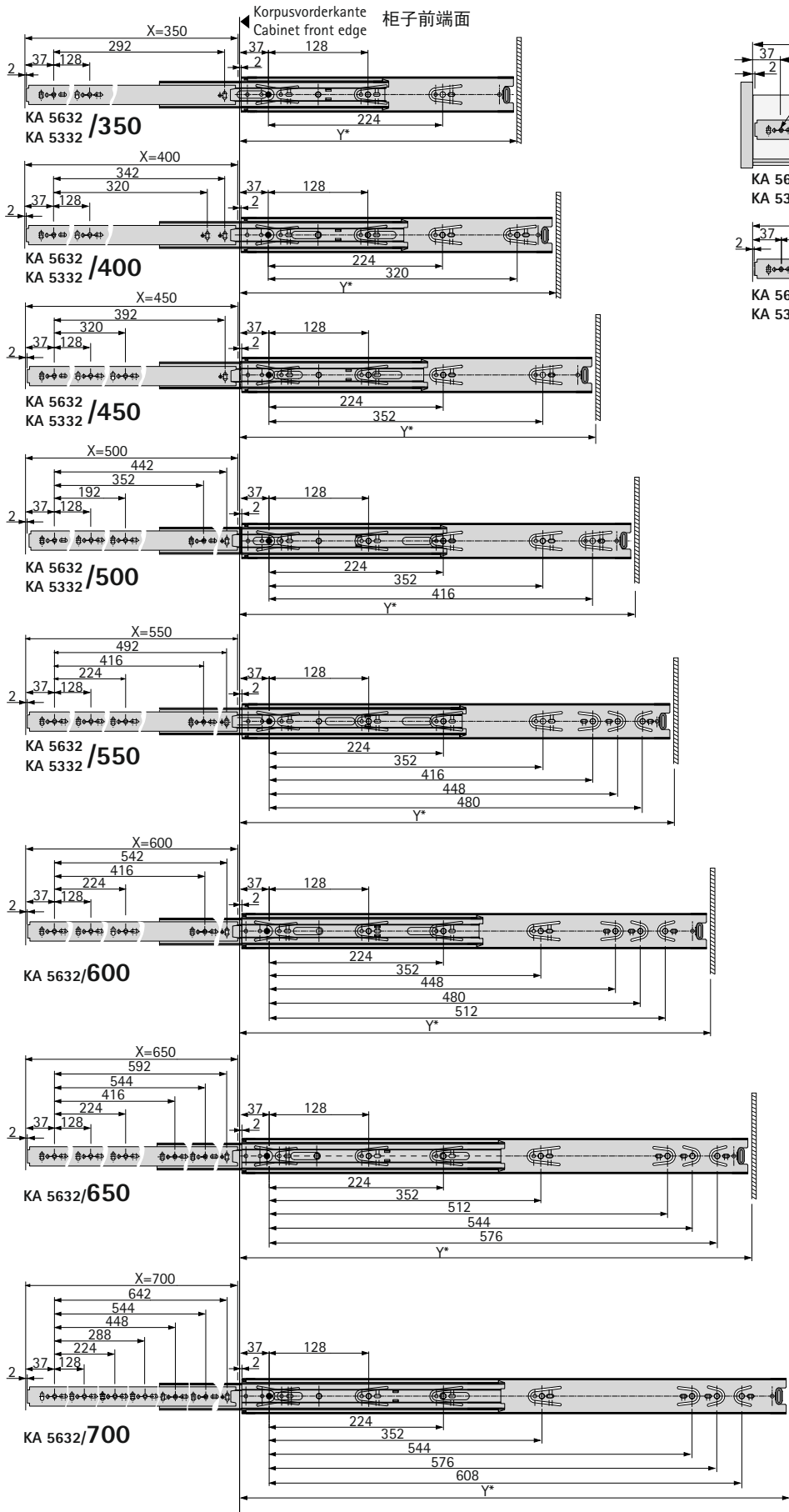
最小柜内深度

\*Mindestkorpustiefe = Schubkastenlänge + 4mm

\*Min. cabinet depth = Drawer length + 4mm

\*最小柜内深度=抽屉长度+4mm





X = Schubkastenlänge  
Drawer length  
抽屉长度

Y = Mindestkorpusstärke  
min. cabinet depth  
最小柜内深度

\*Mindestkorpusstärke = Schubkastenlänge + 4mm

\*Min. cabinet depth = Drawer length + 4mm

\*最小柜内深度=抽屉长度+4mm